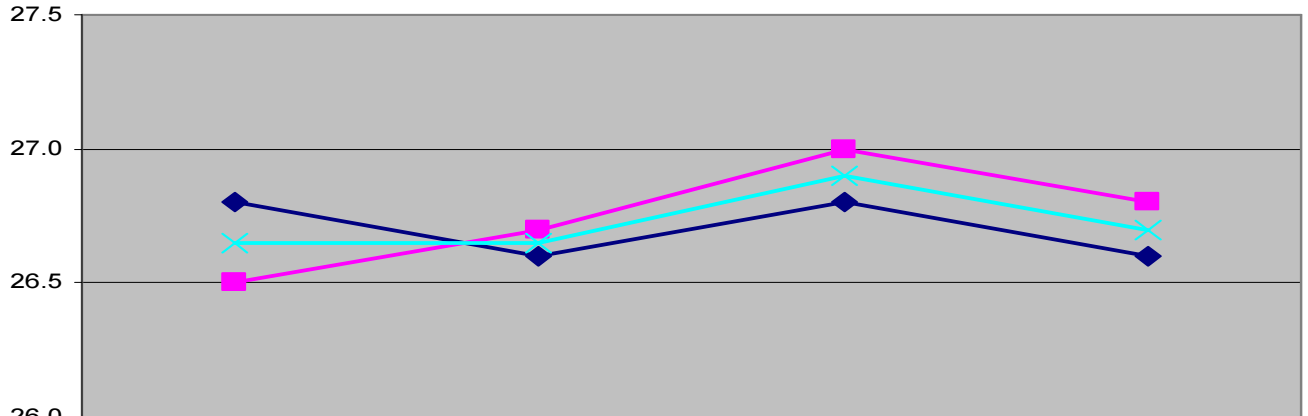


Appendix 1

Table 1

**Key Stage 2
Average Point Score**

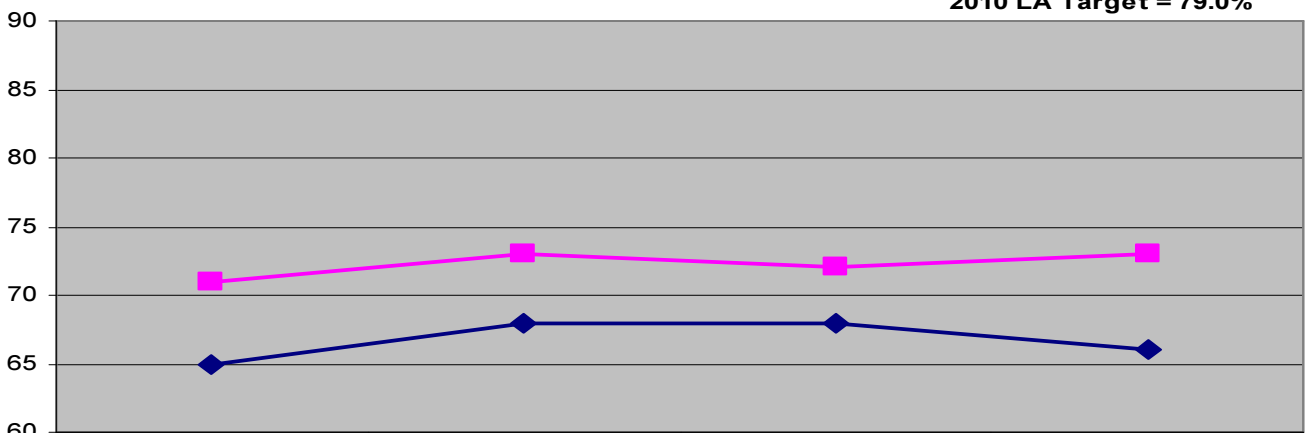


	2007	2008	2009	2010
English	26.8	26.6	26.8	26.6
Maths	26.5	26.7	27.0	26.8
Overall	26.7	26.7	26.9	26.7

Table 2

Key Stage 2 L4+ English and Maths - LA / National Comparison

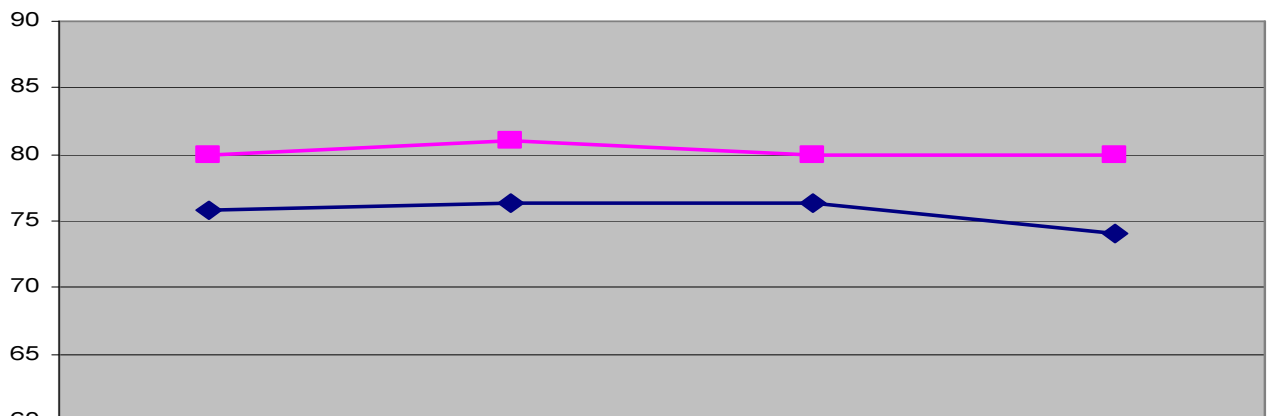
2010 LA Target = 79.0%



	2007	2008	2009	2010
LA	65	68	68	66
Nat	71	73	72	73

Table 3

Key Stage 2 English L4+ - LA / National Comparison



	2007	2008	2009	2010
LA	75.8	76.3	76.3	74
National	80	81	80	80

Table 4

Key Stage 2 Mathematics L4+ - LA / National Comparison

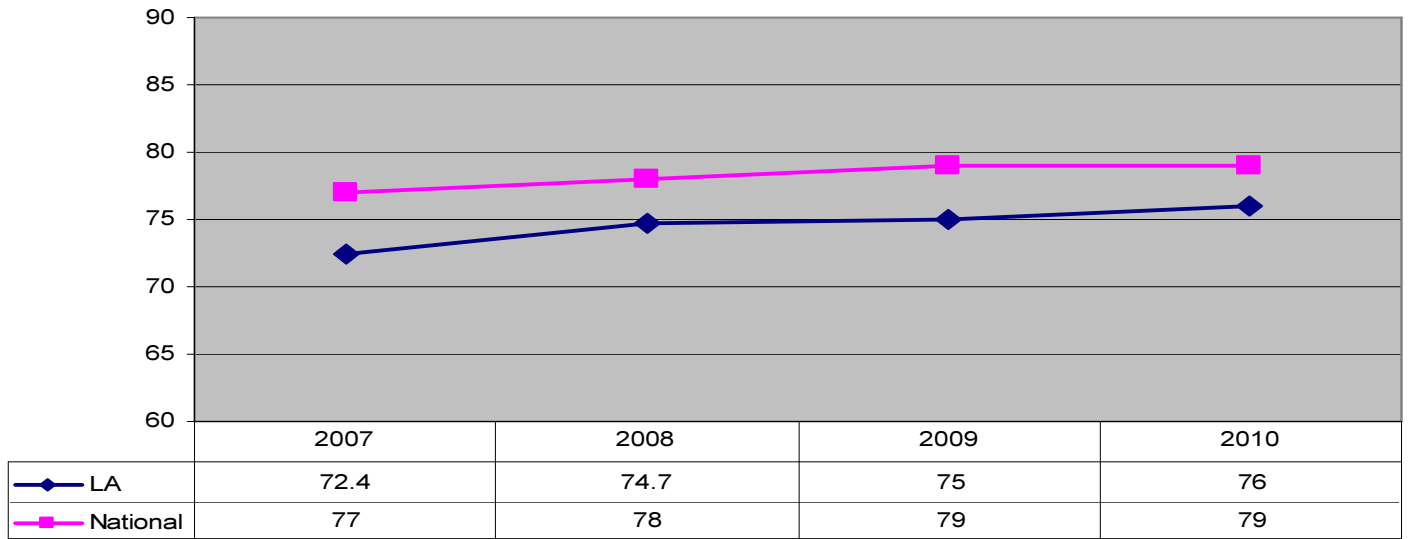


Table 5

2 Levels Progress in English - LA / National Comparison

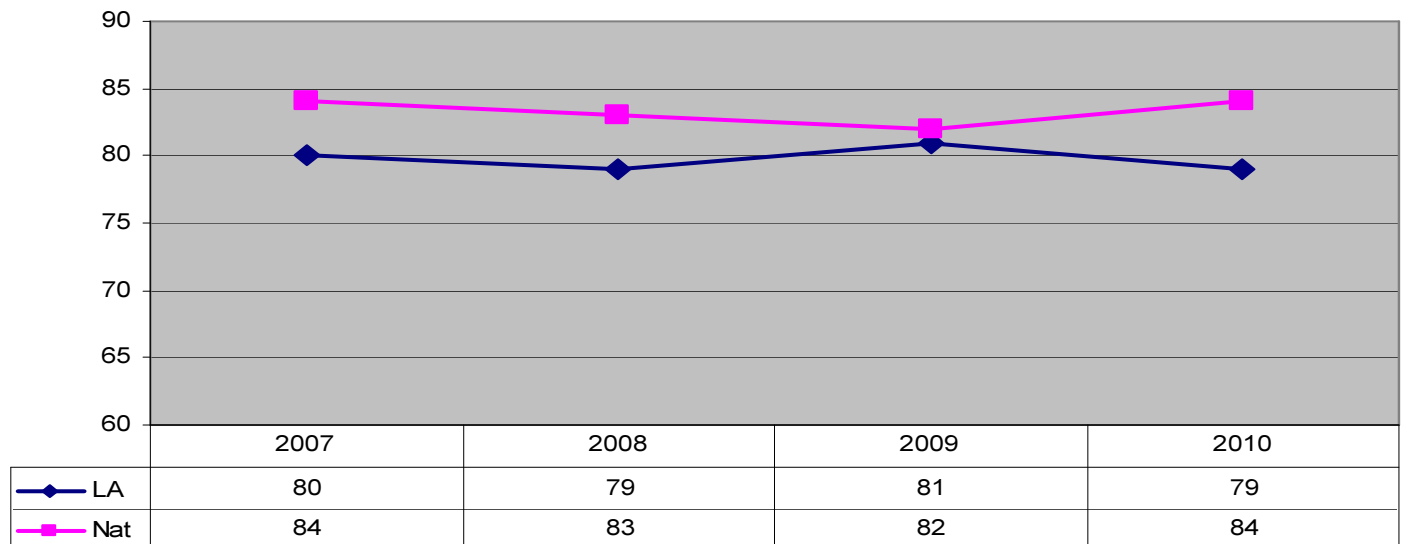
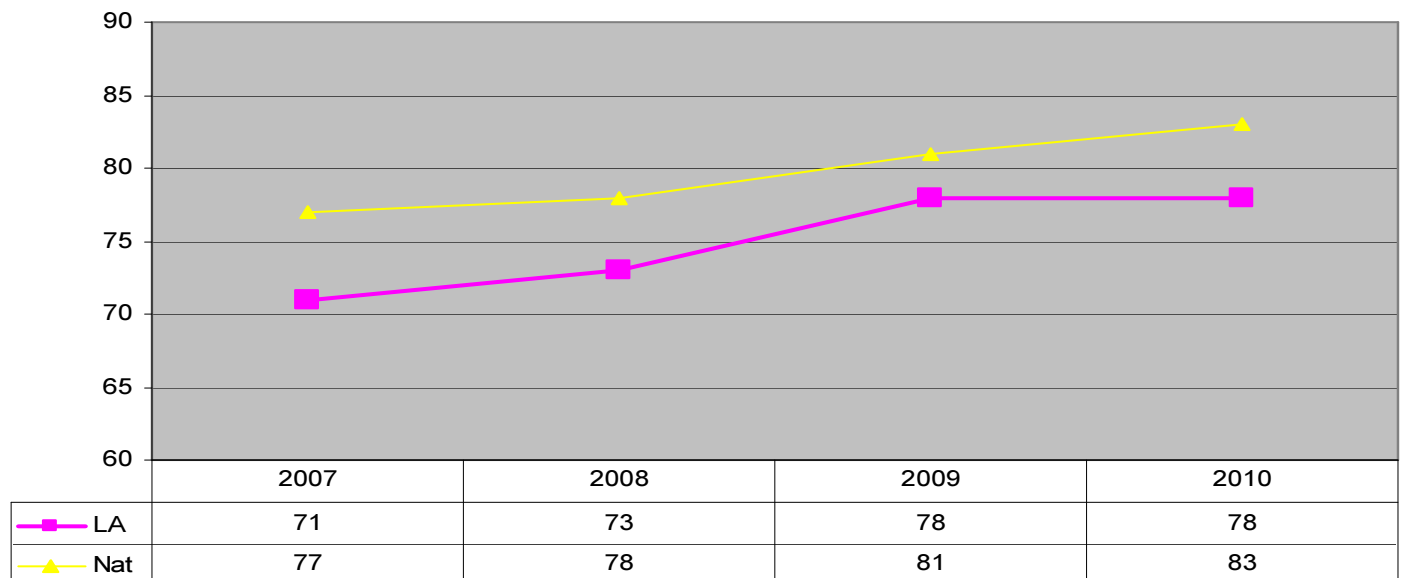


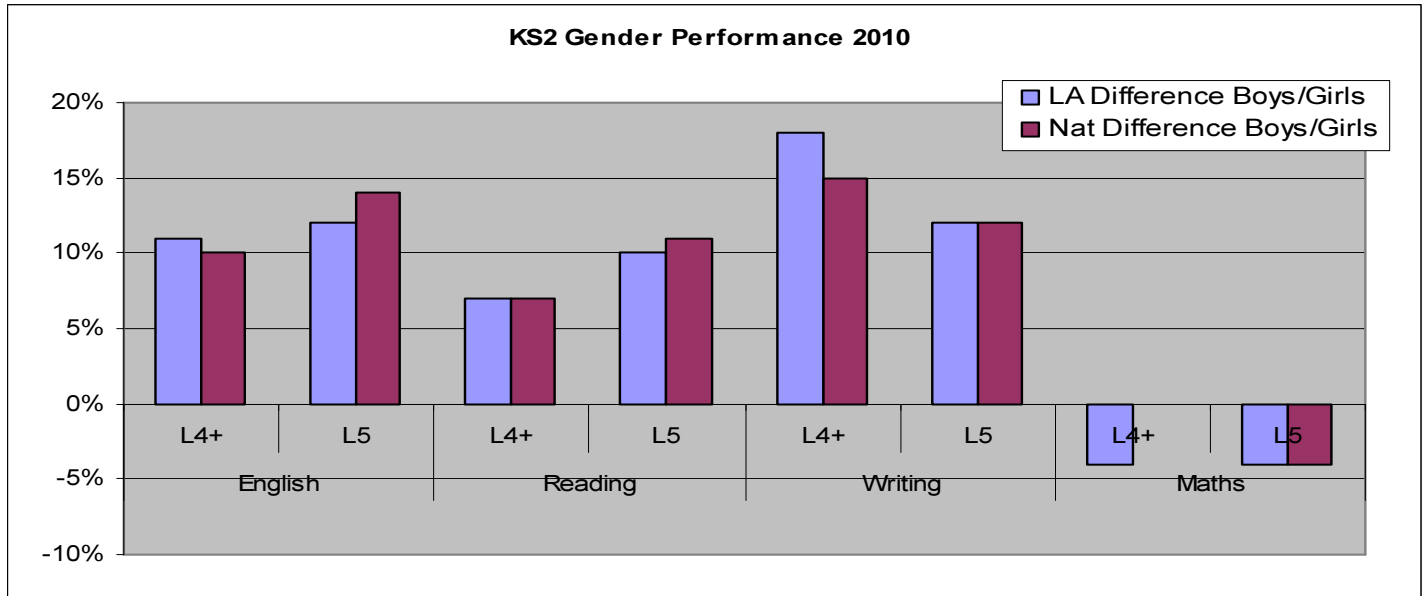
Table 6

2 Levels Progress in Mathematics - LA / National Comparison



Appendix 2

Table 1



The performance of girls is above boys in English, reading and writing but in line with the gender gap nationally. Boys performance is slightly above girls in mathematics again in line with the gender gap nationally.

Table 2

Percentage of Children in Care achieving L4+ at KS2

English 2006–2010

	2006	2007	2008	2009	2010
% achieving L4+	36.4	29.0	46.6	33.3	28.6
Rotherham CiC Cohort	22	24	15	21	21

Maths 2006- 2010

	2006	2007	2008	2009	2010
% achieving L4+	50.0	33.3	46.6	28.6	42.9
Rotherham CiC Cohort	22	24	15	21	21

- Care should be taken in comparing small numbers of pupils year on year but the outcomes reflect committed and successful work by students, the Get Real Team and other colleagues.

Table 3

Performance of pupils eligible for FSM

	L4+ Eng & Ma	2 Levels English	2 Levels Maths
2007	44.2	74	62
2008	45.8	74	63
2009	48.6	76	70
2010	48.3	77	69

Gap between the performance of pupils eligible for FSM and pupils not eligible for FSM

	L4+ Eng & Ma	2 Levels English	2 Levels Maths
2007	25.2	7	11
2008	26.9	6	12
2009	24	5	10
2010	22.8	2	12

Table 4 - Performance by Ethnicity * *Black and Minority Ethnic background***English**

Boys	2008		2009		2010	
	Level 4+	Level 5	Level 4+	Level 5	Level 4+	Level 5
BME	60.6	10.0	58.8	14.0	67.4	25.2
All	70.3	18.0	70.2	20.2	67.9	20.8
Difference	9.7	8.0	11.4	6.2	0.5	-4.4
Girls	2008		2009		2010	
	Level 4+	Level 5	Level 4+	Level 5	Level 4+	Level 5
BME	73.1	20.8	70.4	19.1	83.5	24.4
All	82.8	31.5	82.7	32.5	79.4	33.0
Difference	9.7	10.7	12.3	13.4	-4.1	8.6
Overall	2008		2009		2010	
	Level 4+	Level 5	Level 4+	Level 5	Level 4+	Level 5
BME	66.2	14.8	65.1	16.8	75.2	24.8
All	76.3	24.5	76.3	26.2	73.8	27.0
Difference	10.1	9.7	11.2	9.4	-1.4	2.2

Mathematics

Boys	2008		2009		2010	
	Level 4+	Level 5	Level 4+	Level 5	Level 4+	Level 5
BME	65.6	17.5	71.3	27.2	71.1	27.4
All	74.7	29.0	76.2	31.7	78.4	28.6
Difference	9.1	11.5	4.9	4.5	7.3	1.2
Girls	2008		2009		2010	
	Level 4+	Level 5	Level 4+	Level 5	Level 4+	Level 5
BME	69.2	19.2	61.1	14.8	77.2	24.4
All	74.7	23.9	75.3	26.4	74.5	24.8
Difference	5.5	4.7	14.2	11.6	-2.7	0.4
Overall	2008		2009		2010	
	Level 4+	Level 5	Level 4+	Level 5	Level 4+	Level 5
BME	67.2	18.3	65.8	20.5	74.0	25.9
All	74.7	26.5	75.8	29.1	76.4	26.7
Difference	7.5	8.2	10.0	8.6	2.4	0.8

*(BME) Black and Minority Ethnic background**(WBRI) White British background*

The performance of BME pupils has improved in both English and mathematics in 2010.

Comparison with Statistical Neighbours in 2010 has been removed as data isn't available for a number of Authorities due to the number of schools that boycotted the Key Stage 2 Tests.